

Low Power NK-3G72 Output Card Replacement



Warning Hazardous Voltages — For important safety information, please refer to the section 'Important Regulatory and Safety Notices to Service Personnel' in the NK Series User Guide.

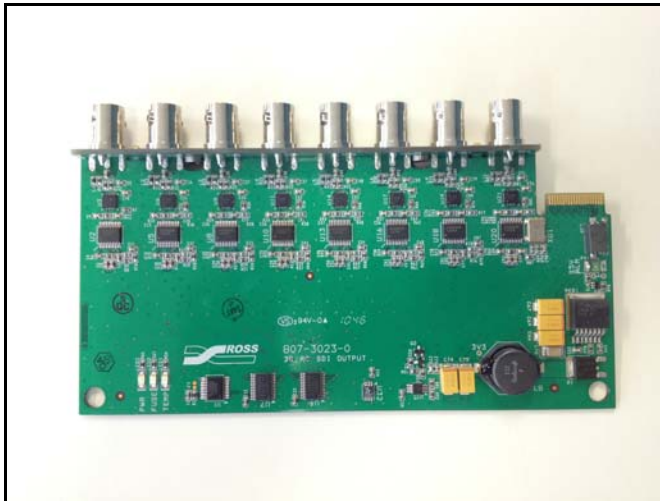
When the NK-3G72 frame is fully populated as 72x72 with 3G SDI inputs and output cards, the total power consumption exceeds the output capability of the 100W external power supply.

To prevent problems when the frame is fully populated, Ross Video has developed a new lower power version of the output card (NK-O3G72). To keep the total power consumption below 100W, there should be no more than seven of the older output cards in the frame.

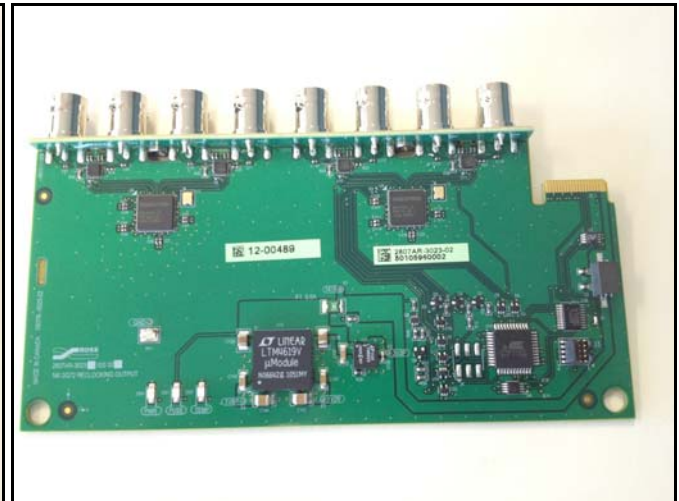
This document describes the process required to replace the output cards in the frame.

Identifying the Different Output Cards

The following pictures provide a visual of the difference between the old and new output cards.



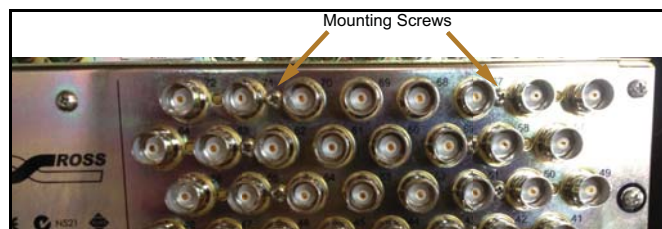
Old NK-O3G72 Output Card (9708-3023-RC, 6W)



New NK-O3G72 Output Card (2807AR-3023-02, 2W)

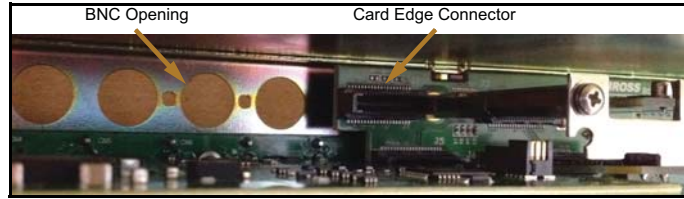
Replacing the NK-O3G72 Output Card

1. Upgrade the software on the NK-3G72 to v2.02 or higher (see “**Upgrading the NK-3G72 Software**” on page 4–2).
The v2.02 software or higher is required to support the new output cards. This software is compatible with the old and new versions of the output card.
2. Power down the NK-3G72.
3. Remove all cables attached to the old NK-O3G72 output card.
4. Remove the two mounting screws that fasten the old NK-O3G72 output card to the frame.



5. Remove the old NK-O3G72 output card from the front of the NK-3G72 frame.

- Insert the new NK-O3G72 output card in the front of the frame so that the BNCs protrude through the openings in the frame and so that the card is fully inserted into the card edge connector.



- Tighten the two mounting screws that hold the new NK-O3G72 output card in the frame.
- Connect the cables to the new NK-O3G72 output card.
- Power up the NK-3G72 router.
- Verify the functionality of the router.

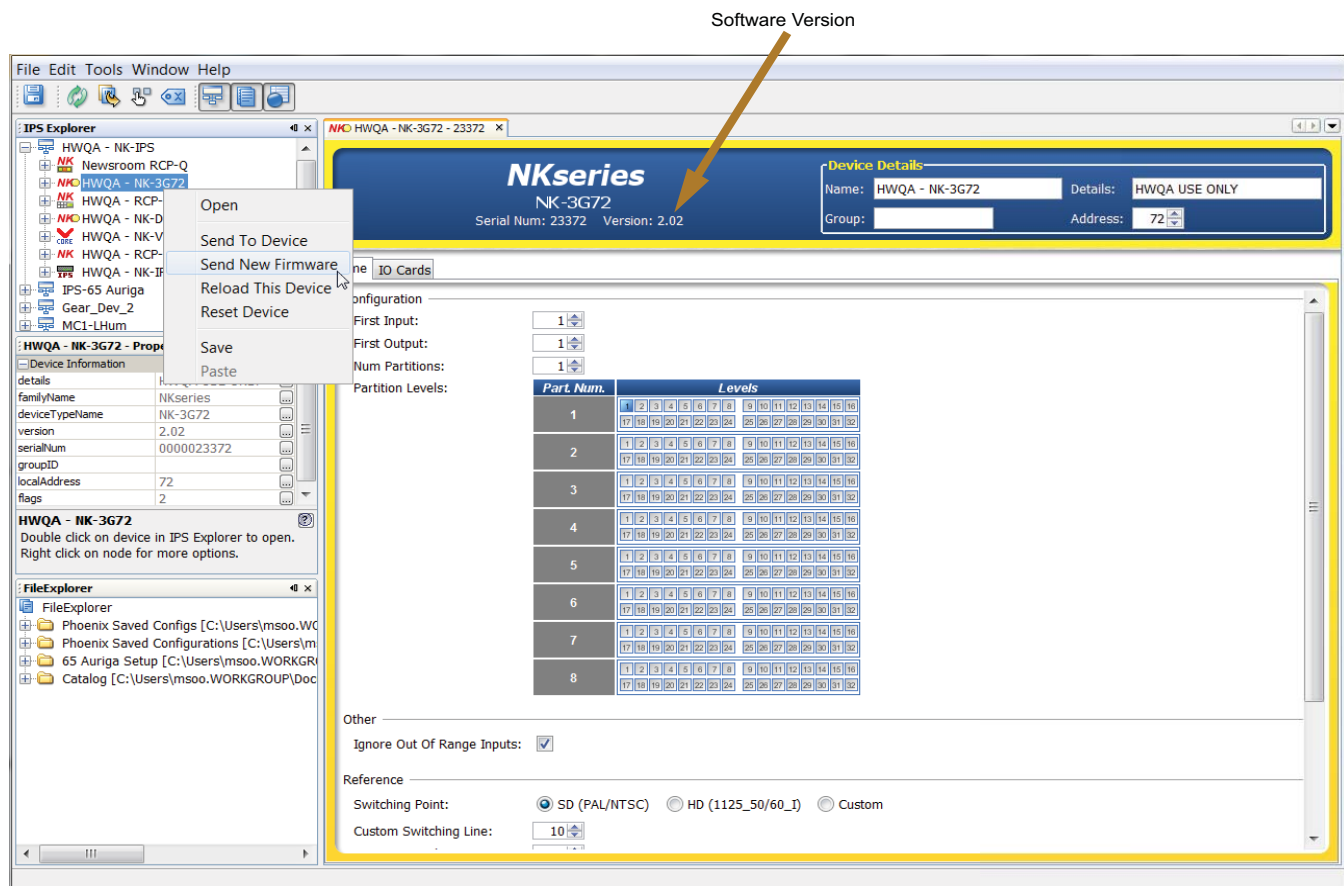
If there any issues, contact Ross Video Tech Support.

- Return the old NK-O3G72 output card to Ross Video.

Upgrading the NK-3G72 Software

In Phoenix, right-click the necessary NK-3G72 frame in the **IPS Explorer** window and select **Send New Firmware** (see the image *NK-3G72 in Phoenix* below).

The current SW version number is shown in the **Device Properties** window (see the image *NK-3G72 in Phoenix* below).



NK-3G72 in Phoenix

- ★ Contact Ross Video Tech Support to obtain the latest version of the software.